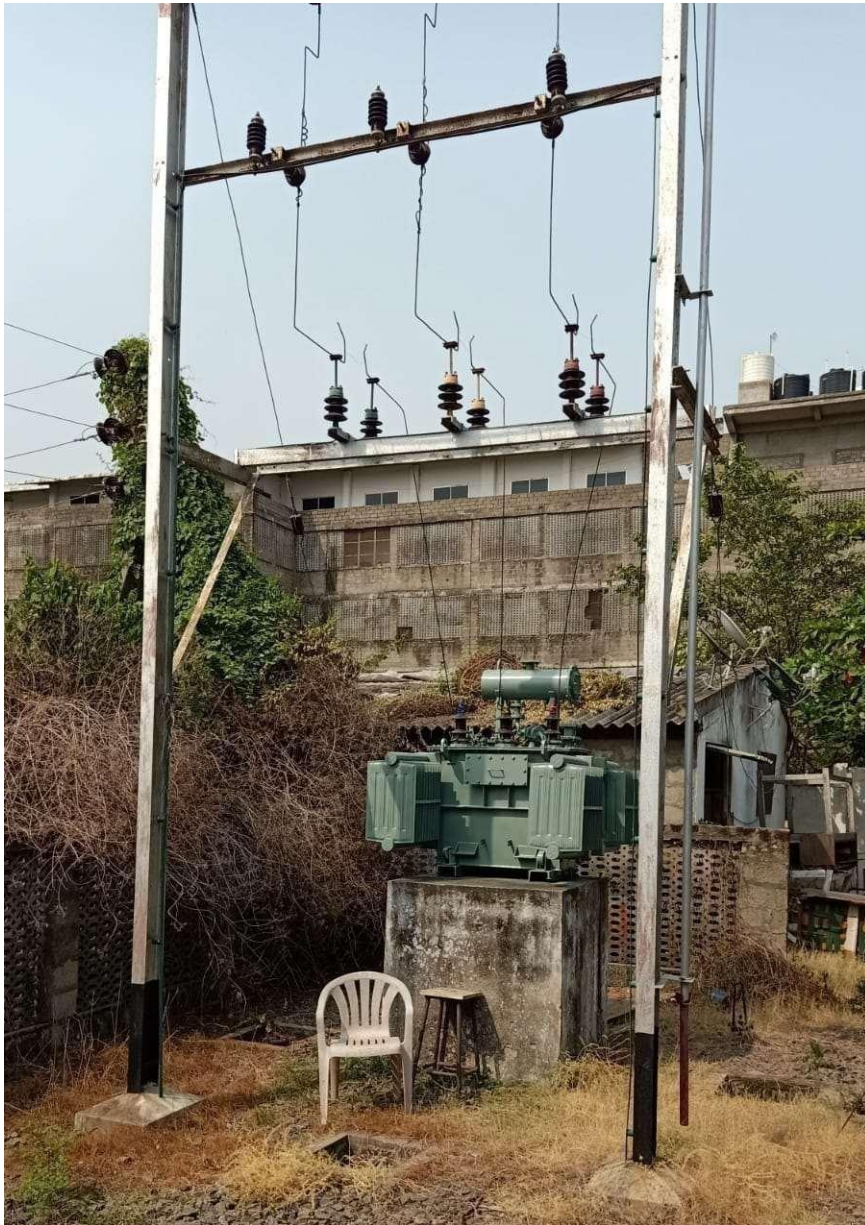


Date: 15-06-2025

Electrical Grid Power Supply Connection

The Kakinada Institute of Engineering Technology (KIET) is integrated with a stable and highcapacity electrical grid power connection, ensuring a consistent and reliable supply of electricity across the campus. This connection supports the extensive energy demands of academic buildings, laboratories, hostels, and other facilities. The grid power infrastructure is equipped with modern electrical panels, circuit breakers, and protective devices to safeguard against power surges and electrical faults. Regular monitoring and maintenance are conducted by qualified electrical engineers to ensure the integrity and efficiency of the system. This robust grid connection is crucial for maintaining the uninterrupted operation of educational activities and campus services at KIET.





HT DIGITAL BILL FOR THE MONTH OF April 2025

GST NO : 37AAACE9876B1ZH

Service Details			Consumer Details			BILL DATE 01-05-2025		DUE DATE FOR PAYMENT 15-05-2025	
Contracted MD(KVA/HP)	297 (KVA/HP)	SC. No. RUJ667							
Specified Voltage(KVA)	11 KV	M/S KAKINADA INSTITUTE OF							
Actual Voltage	11 KV	ENGINEERING & TECHNOLOGY							
Category	IA(I)	CORANGH(V),VANAM ROAD							
Feeder Type	COMMON	TALLAREVU(M),E.G.DIST							
VAN ID	APFPCD0100001601								
Total Monthly Consumption Details									
Particulars	Date	KWH	KVAH	KVA	TOD PEAK	TOD OFF PEAK	COLONY	PF	LF
Reading as on	01/05/2025	716691	733854	40.945	-	-	-	-	-
Reading as on	01/04/2025	701897	718977	-	-	-	-	-	-
Difference	-	14794	14877	-	-	-	-	-	-
Multiplying Factor	-	8.0	8.0	-	-	-	-	-	-
Total Consumption	-	118352	119016	327.560	0.00	0.00	-	0.99	50
Monthly Min Consumption	-	-	8189	237.600	-	-	-	-	-
Main Consumption	-	-	119016	-	-	-	-	-	-
L & F	-	-	-	-	-	-	-	-	0.00
Excess Submeter Consumption	-	0	0	0	-	-	-	-	-
Segregated Colony	-	-	-	-	-	-	-	-	-
Open Access Consumption Details									
Supplier Name		KVAH Share			KVA Share		% Wheeling		
Billing Summary									
Particulars	Bill Issue Date	KVAH	KVA	TOD PEAK	TOD OFF PEAK	COLONY			
Billed Units	01-05-2025	119016	327.560	0.00	0.00	0			
BILL DETAILS									
Particulars	Units	Rate Per Unit	Amount(Rs.)						
Demand Charges(Normal)	297	0.00	141075						
Demand Charges(Penal)(110.29%)	30.56	0.00	29032						
Energy Charges(All Units)	119016	0.00	910472.4						
Energy Excess Charges	0		0						
Electricity Duty Charges	118352	0.00	118352						
Colony Charges	0	0.00	0						
L&F Charges			0.00						
Excess Submeter Charges	0	0	0						
Energy Charges Including Fuel Cost Adjustment			0.00						
Fuel Surcharge Adjustment			0.00						
True up Charge			0						
FPPCA Charge			145897.14						
ToD Charges			22416						
ToD Incentive (-)			0						
Sub Total							1367244.54		
Customer Charges							1406		
Grid support charges							0		
Wheeling Charges							0		
LPF Charges							0		
RKVAH Surcharge Hydel							0		
RKVAH Surcharge Wind							0		
Open Access CSS							0		
ACD Surcharge							0		
Late Payment Charges							7823.35		
Interest on ED							1014.23		
Penal Interest							0		
Transformer Hire Charges							0		
Differential Voltage Surcharges							0		
Load Factor Incentive (-)							0		
Total For The Month							1377488.12		
TCS							0		
TCS_SF							0		
25% Rebate AppIDDSfication							0		
Ferro Incentive (-)							0		
Pooled Cost Adj(-)							0		
Net ICD Amt(ICD-TDS)(114677-11468)(-)							103209		
Other Credit Adj							0		
Export Amount							0		
Loss (or) Gain							-0.12		
NET BILL							1274279		
(Previous Years)Arrears before 31- Mar-2025							0.00		
(Current Years)Arrears after 01-Apr-2025							-2501.16		
Net Payable Rs.							1271778		
This is a system generated bill only for information, please refer to the bill issued by SAO of the circle only.									
SD Amount:1770800									
(Rupees Twelve Lakh Seventy One Thousand Seven Hundred and Seventy Eight Only)									

SD Amount:1770800

(Rupees Twelve Lakhs Seventy One Thousand Seven Hundred and Seventy Eight Only)

TDT
Principal
Srikanth Institute of Eng. & Technol...
KORANG